



2023 PLUMBING PROMOTIONS



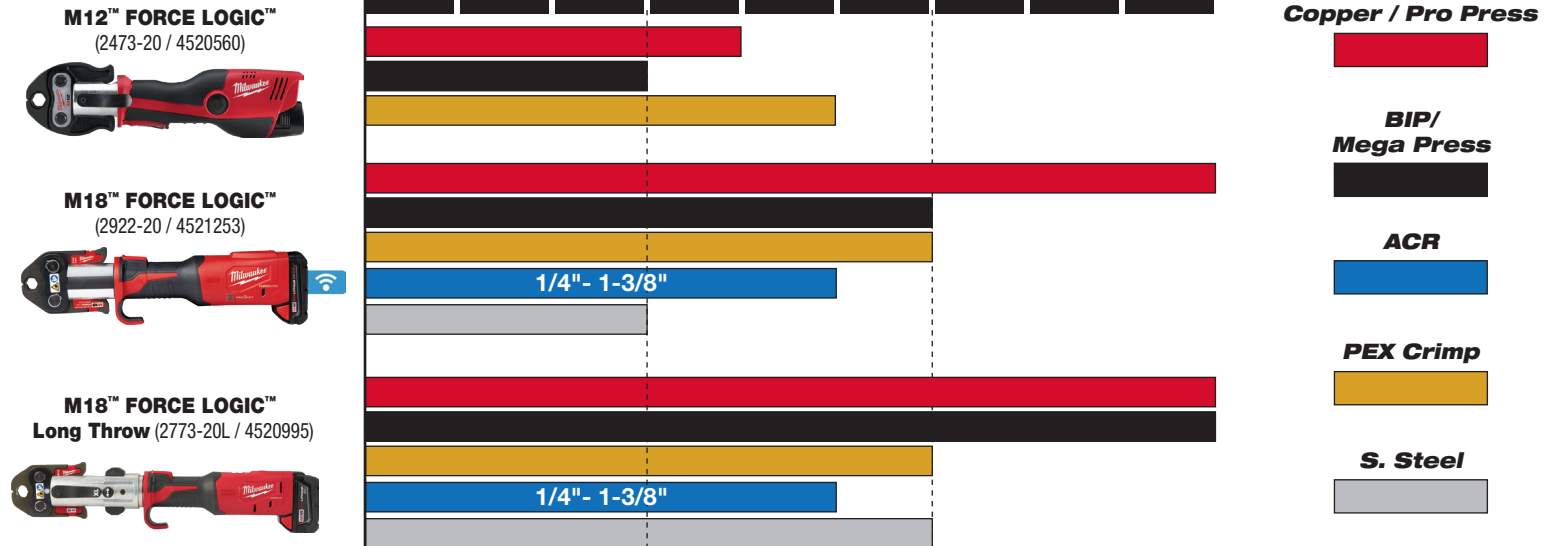
VALID FEBRUARY 1ST TO DECEMBER 31, 2023

ANDREW SHERET LIMITED



EST 1892

MILWAUKEE® PRESS SOLUTION LANDSCAPE



NEW PRODUCT HIGHLIGHT



M18 FUEL™ 2" ProPEX®
Expander Kit w/
ONE-KEY™ with 1-1/4" - 2"
Expander Heads
(2932-22XC / 4520784)

MOST
CONSISTENT
INSTALLATIONS

LIGHTEST
MOST COMPACT
2"
EXPERIENCE

FASTEST
1-1/4" - 2"
EXPANSIONS





HOW TO REDEEM

ANDREW SHERET LIMITED



EST 1892

1



GO TO
MILWAUKEECANADAEBATES.CA/

2



SELECT A
PROMOTION

3



COMPLETE & SUBMIT FORM
TOOL SERIAL NUMBER AND
PROOF OF PURCHASE REQUIRED

BUY THIS

M12™
FORCE LOGIC™
Press Tool
1/2" - 1" Kit
(2473-22 / 4520565)



BUY THIS

M18™
FORCE LOGIC™
Press Tool
w/ ONE-KEY™
w/ 1/2" - 2"
CTS Jaws
(2922-22 / 4521255)



BUY THESE



M18™ FORCE LOGIC™
Long Throw Press
Tool Kit (2773-20L / 4520995)

Black Iron Press
1/2" - 2" Kit
(49-16-2697 / 4526816)

GET THIS FREE

M12™ Copper
Tubing Cutter
(2471-20 / 4520145)



PLUS ONE OF YOUR CHOICE



M12™
1 1/4" Jaw
(49-16-2453 /
4526769)



1/2" IPS Jaw
for M12™
FORCE LOGIC™
Press Tool
(49-16-2450B / 4526776)



3/4" IPS
Jaw for M12™
FORCE LOGIC™
Press Tool
(49-16-2451B / 4526778)



SPECIAL ORDER
1" IPS Jaw
for M12™ FORCE
LOGIC™ Press
Tool (49-16-2452B)

\$450 VALUE

GET THIS FREE

M18 FUEL™
Compact
Band Saw Kit
(2829-22 / 4520905)



\$658 VALUE

GET THIS FREE

1/2" - 2" Copper Jaws
With Case Included



\$1,600 VALUE



HOW TO REDEEM

ANDREW SHERET LIMITED



EST 1892

1



GO TO
MILWAUKEECANADAEBATES.CA/

2



SELECT A
PROMOTION

3



COMPLETE & SUBMIT FORM
TOOL SERIAL NUMBER AND
PROOF OF PURCHASE REQUIRED

BUY ONE OF THESE



M12 FUEL™ ProPEX® Expander Kit
w/ 1/2" - 1" RAPID SEAL™ ProPEX®
Expander Heads (2532-22 / 4520360)



SPECIAL ORDER

M12™ ProPEX®
Expansion Tool Kit
(2432-22)

GET THIS
FREE

M12™ Cordless PVC
Shear (Bare Tool)
(2470-20 / 4520150)



\$238 VALUE

BUY THIS



M18 FUEL™ 2" ProPEX® Expander
Kit w/ ONE-KEY™ with 1 1/4" - 2"
Expander Heads (2932-22XC / 452-0784)

GET THESE
FREE

PACKOUT™
Deep Organizer
(48-22-8432 / 452-6590)



1/2" ProPEX® Expander
Head w/ RAPID SEAL™
(49-16-2414 / 4526740)



3/4" ProPEX® Expander
Head w/ RAPID SEAL™
(49-16-2416 / 4526744)



1" ProPEX® Expander
Head w/ RAPID SEAL™
(49-16-2418 / 4526746)

\$300 VALUE



HOW TO REDEEM

ANDREW SHERET LIMITED



EST 1892

1



GO TO
MILWAUKEECANADAEBATES.CA/

2



SELECT A
PROMOTION

3



COMPLETE & SUBMIT FORM
TOOL SERIAL NUMBER AND
PROOF OF PURCHASE REQUIRED

LIST OF QUALIFYING SKU'S AND CORRESPONDING FREE GOODS



SKU		DESCRIPTION	
MKE	AS	QUALIFYING SKUS	
2473-22	4520565	M12™ PRESS TOOL KIT	
MKE	AS	FREE GOODS	
2471-20	4520145	M12™ COPPER TUBING CUTTER	
49-16-2453	4526769	M12™ 1-1/4" JAW	YOUR CHOICE OF 1 JAW
49-16-2450B	4526776	M12™ 1/2" BIP JAW	
49-16-2451B	4526778	M12™ 3/4" BIP JAW	
49-16-2452B	SPECIAL ORDER	M12™ 1" BIP JAW	

SKU		DESCRIPTION	
MKE	AS	QUALIFYING SKUS	
2922-22	4521255	M18™ FL PRESS TOOL W/ ONE-KEY™ W/ 1/2"-2" CTS JAWS	
MKE	AS	FREE GOODS	
2829-22	4520905	M18 FUEL™ COMPACT BANDSAW KIT	

SKU		DESCRIPTION	
MKE	AS	QUALIFYING SKUS	
2773-20L	4520995	M18™ FL LONG THROW TOOL ONLY	
49-16-2697	4526816	M18™ 1/2" - 2" BLACK IRON JAW KIT	
MKE	AS	FREE GOODS	
49-16-2650	4526770	M18™ 1/2" JAW	
49-16-2651	4526772	M18™ 3/4" JAW	
49-16-2652	4526774	M18™ 1" JAW	
49-16-2653	4526761	M18™ 1-1/4" JAW	
49-16-2654	4526762	M18™ 1-1/2" JAW	
49-16-2655	4526763	M18™ 2" JAW	



HOW TO REDEEM

ANDREW SHERET LIMITED



EST 1892

1



GO TO
MILWAUKEECANADAEBATES.CA/

2



SELECT A
PROMOTION

3



COMPLETE & SUBMIT FORM
TOOL SERIAL NUMBER AND
PROOF OF PURCHASE REQUIRED



LIST OF QUALIFYING SKU'S AND CORRESPONDING FREE GOODS

SKU		DESCRIPTION
MKE	AS	QUALIFYING SKUS
2532-22	4520360	M12 FUEL™ ProPEX® EXPANDER KIT
2432-22	4520745	M12™ ProPEX® EXPANSION TOOL KIT
MKE	AS	FREE GOODS
2470-20	4520150	M12™ PLASTIC PIPE SHEAR TOOL

SKU		DESCRIPTION
MKE	AS	QUALIFYING SKUS
2932-22XC	4520784	M18 FUEL™ 2" ProPEX® EXPANDER KIT W/ ONE-KEY™ WITH 1 1/4" - 2" EXPANDER HEADS
MKE	AS	FREE GOODS
48-22-8432	4526590	PACKOUT™ DEEP ORGANIZER
49-16-2414	4526740	1/2" ProPEX® EXPANDER HEAD W/ RAPID SEAL™
49-16-2416	4526744	3/4" ProPEX® EXPANDER HEAD W/ RAPID SEAL™
49-16-2418	4526746	1" ProPEX® EXPANDER HEAD W/ RAPID SEAL™



HOW TO REDEEM

ANDREW SHERET LIMITED



EST 1892

1



GO TO
MILWAUKEECANADAEBATES.CA/

2



SELECT A
PROMOTION

3



COMPLETE & SUBMIT FORM
TOOL SERIAL NUMBER AND
PROOF OF PURCHASE REQUIRED

BUY THIS

M18 FUEL™
Sectional Machine
with 7/8" Cable
(2818A-21 / 4512340)

Applicable kits include:

2818-21 **SPECIAL ORDER**, 2818-21 & 2818B-21 **SPECIAL ORDER**



GET THESE
FREE



M18™ REDLITHIUM™ HIGH OUTPUT™ HD12.0 Battery
(48-11-1812 / 4526295)



M18™ ROVER™ Dual Power Flood Light
(2366-20 / 4526402)

\$597 VALUE

BUY ONE OF THESE

MX FUEL™ Sewer Drum Machine for 5/8" - 3/4"
(MXF500-1CP / 4511300)



MX FUEL™ Sewer Drum Machine w/ POWERTREDZ™ for 5/8" - 3/4"
(MXF501-1CP / 4511310)



CABLES SOLD SEPARATELY

GET THESE
FREE



MX FUEL™ REDLITHIUM™ CP203 Battery
(MXFCP203 / 4511010)



Head Attachment Kit For 5/8" & 3/4" Drum Cable
(48-53-2840 / 4513210)

\$1,100 VALUE



HOW TO REDEEM

ANDREW SHERET LIMITED



EST 1892

1



GO TO
MILWAUKEECANADAEBATES.CA/

2



SELECT A
PROMOTION

3



COMPLETE & SUBMIT FORM
TOOL SERIAL NUMBER AND
PROOF OF PURCHASE REQUIRED

BUY THIS

M12™ Drain Snake Kit
(2571-21 / 4520355)



BUY THIS

M18 FUEL™ Drain Snake
w/ CABLE DRIVE™ Kit
(2772A-21 / 4512210)



BUY THIS

M18 FUEL™ SWITCH PACK™
Sectional Drum Machine
with 5/16" Cable
(2775A-211 / 4512340)



Applicable kits include:

2775-211, 2775B-211 / 4512310,
2775C-222 & 2775E-211

GET THESE FREE



\$170 VALUE

GET THESE FREE



PLUS ONE OF YOUR CHOICE



\$250+ VALUE

GET THIS FREE

SWITCH PACK™ Drum
w/ Anchor Cable
(47-53-2775 / 4512600)



PLUS ONE OF YOUR CHOICE



\$400+ VALUE



HOW TO REDEEM

ANDREW SHERET LIMITED



EST 1892

1



GO TO
MILWAUKEECANADAEBATES.CA/

2



SELECT A
PROMOTION

3



COMPLETE & SUBMIT FORM
TOOL SERIAL NUMBER AND
PROOF OF PURCHASE REQUIRED



LIST OF QUALIFYING SKU'S AND CORRESPONDING FREE GOODS

SKU		DESCRIPTION
MKE	AS	QUALIFYING SKUS
2818-21	SPECIAL ORDER	M18 FUEL™ SECTIONAL FOR 5/8" & 7/8" CABLE
2818A-21	4512340	M18 FUEL™ SECTIONAL MACHINE 7/8" KIT
2818B-21	SPECIAL ORDER	M18 FUEL™ SECTIONAL MACHINE 5/8" KIT
MKE	AS	FREE GOODS
48-11-1812	4526295	M18™ HIGH OUTPUT™ HD12.0 BATTERY
2366-20	4526402	M18™ DUAL POWER FLOOD LIGHT

SKU		DESCRIPTION
MKE	AS	QUALIFYING SKUS
MXF500-1CP	4511300	MX FUEL™ SEWER DRUM MACHINE FOR 5/8" - 3/4"
MXF501-1CP	4511310	MX FUEL™ SEWER DRUM MACHINE W/ POWERREDZ™ FOR 5/8" - 3/4"
MKE	AS	FREE GOODS
MXFCP203	4511010	MX FUEL™ REDLITHIUM™ CP203 BATTERY
48-53-2840	4513210	HEAD ATTACHMENT KIT FOR 5/8" & 3/4" DRUM CABLE



HOW TO REDEEM

ANDREW SHERET LIMITED



EST 1892

1



GO TO
MILWAUKEECANADAEBATES.CA/

2



SELECT A
PROMOTION

3



COMPLETE & SUBMIT FORM
TOOL SERIAL NUMBER AND
PROOF OF PURCHASE REQUIRED

LIST OF QUALIFYING SKU'S AND CORRESPONDING FREE GOODS

SKU		DESCRIPTION
MKE	AS	QUALIFYING SKUS
2571-21	4520355	M12™ DRAIN SNAKE KIT
		FREE GOODS
48-22-7218	4526878	18" AL PIPE WRENCH
48-22-8250	SPECIAL ORDER	JOBSITE COOLER
2108	SPECIAL ORDER	ROVER™ MAGNETIC FLOOD LIGHT

SKU		DESCRIPTION
MKE	AS	QUALIFYING SKUS
2772A-21	4512210	M18™ DRAIN SNAKE KIT
MKE	AS	FREE GOODS
48-22-7218	4526878	18" AL PIPE WRENCH
48-22-8250	SPECIAL ORDER	JOBSITE COOLER
2108	SPECIAL ORDER	ROVER™ MAGNETIC FLOOD LIGHT
48-53-2671	SPECIAL ORDER	1/4" x 35' DRAIN CABLE
48-53-2672	4512630	1/4" x 50' DRAIN CABLE
48-53-2673	4512640	5/16" x 35' DRAIN CABLE
48-53-2675	4512660	3/8" x 35' DRAIN CABLE
48-53-2561	4512725	5/16" X 25' BULB CABLE PREM

YOUR
CHOICE
OF 1
CABLE

SKU		DESCRIPTION
MKE	AS	QUALIFYING SKUS
2775-211	SPECIAL ORDER	M18 FUEL™ SWITCH PACK™ W/O CABLE
2775A-211	4520910	M18 FUEL™ SWITCH PACK™ 5/16" KIT
2775B-211	4512310	M18 FUEL™ SWITCH PACK™ 3/8" KIT
2775C-222	SPECIAL ORDER	M18 FUEL™ SWITCH PACK™ 1/2" KIT
2775E-211	SPECIAL ORDER	M18 FUEL™ SWITCH PACK™ 5/8" KIT
MKE	AS	FREE GOODS
47-53-2775	4512600	SWITCH PACK™ DRUM
48-53-2772	SPECIAL ORDER	5/16" X 75' DROP HEAD CABLE
48-53-2773	4512730	3/8" X 50' CABLE
48-53-2774	4512740	1/2" X 50' CABLE
48-53-2775	4512750	5/8" X 50' CABLE

YOUR
CHOICE
OF 1
CABLE





SEWER & DRAIN MAINTENANCE

MACHINES	RECOMMENDED APPLICATION SELECTION			CABLE CAPACITY	
	APPLICATIONS	PIPE SIZES	MAX DISTANCE	CABLE SIZES	PIPE SIZES
<p>MX FUEL™ Sewer Drum Machine w/ POWERREDZ™</p>	<p>Sewer Lateral Lines</p>	3" – 8"	200'	5/8" 3/4"	3" – 6" 4" – 8"
<p>MX FUEL™ Sewer Drum Machine</p>	<p>Sewer Lateral Lines</p>	3" – 8"	200'	5/8" 3/4"	3" – 6" 4" – 8"
<p>M18 FUEL™ Sectional Machine</p>	Sinks Kitchen Sinks Bathtubs Showers Roofstacks Sewer Lateral Lines	1-1/4" – 6"	150'	5/8" 7/8"	1-1/4" – 2" 2" – 6"
<p>M18 FUEL™ Sewer Sectional Machine w/ CABLE DRIVE™</p>	<p>Sewer Lateral Lines</p>	2" – 8"	200'	7/8" 1-1/4"	2" – 6" 3" – 8"

RECOMMENDED APPLICATION SELECTION					
MACHINES	APPLICATIONS	PIPE SIZES	MAX DISTANCE	CAMERA HEAD DIAMETER	PUSH CABLE DIAMETER
<p>M18™ 120' Pipeline Inspection System</p>	<p>Sewer Lateral Lines</p>	2" – 6"	120'	25mm	10mm
<p>M18™ 200' Pipeline Inspection System</p>	<p>Sewer Lateral Lines</p>	3" – 10"	200'	34mm	12mm

DRUM MACHINE & DRUM CABLES	PART #	DESCRIPTION			
	MXF500-1CP / 4511300	MX FUEL™ Sewer Drum Machine Kit			
	MXF501-1CP / 4511310	MX FUEL™ Sewer Drum Machine w/ POWERREDZ™ Kit			
	48-53-2325 / 4513030	5/8" x 25' Inner Core Drum Cable			
	48-53-2350 / 4513040	5/8" x 50' Inner Core Drum Cable			
	48-53-2310 / 4513050	5/8" x 100' Inner Core Drum Cable			
	48-53-2425 / 4513070	3/4" x 25' Inner Core Drum Cable			
	48-53-2450 / 4513070	3/4" x 50' Inner Core Drum Cable			
	48-53-2410 / 4513080	3/4" x 100' Inner Core Drum Cable			
	48-53-2802 / 4513110	5/8" x 2' Leader Cable			
48-53-2902 / 4513100	3/4" x 2' Leader Cable				
SECTIONAL MACHINE & SECTIONAL CABLES	PART #	DESCRIPTION			
	2818-21	M18 FUEL™ Sectional Machine for 5/8" & 7/8" Cables			
	2818B-21	M18 FUEL™ Sectional Machine with 5/8" Cable			
	2818A-21 / 4512340	M18 FUEL™ Sectional Machine with 7/8" Cable			
	2871-22	M18 FUEL™ Sewer Sectional Machine Kit w/ CABLE DRIVE™ (Accessories & Cables Sold Separately)			
	2871A-21	M18 FUEL™ Sewer Sectional Machine Kit w/ CABLE DRIVE™ (1-1/4" Accessory Set)			
	48-53-2680 / 4512987	5/8" x 7-1/2' All-Purpose Open Wind Sectional Cable			
	48-53-2852 / 4512955	7/8" x 15' All-Purpose Open Wind Sectional Cable			
48-53-2851 / 4512950	1-1/4" x 15' All-Purpose Open Wind Sectional Cable				
48-53-2854	1-1/4" x 15' Heavy Duty Open Wind Sectional Cable				
ACCESSORIES	PART #				DESCRIPTION
	Drum	Sectional			
	All	5/8"	7/8"	1-1/4"	
		48-53-3812			Drop Head Straight Auger
		48-53-3811			Drop Head Bulb Auger
			48-53-3829 / 4512985		Flexible Straight Auger
	48-53-2830 / 4513120		48-53-3830 / 4512960	48-53-4830	Straight Auger
			48-53-3828 / 4512982		Flexible Funnel Auger
		48-53-3813			Funnel Auger
	48-53-2831 / 4513130		48-53-3831	48-53-4831	Funnel Auger
			48-53-3825 / 4512985		2" Root Cutter
	48-53-2832 / 4513140		48-53-3832 / 4512985	48-53-4832	3" Root Cutter
	48-53-2833 / 4513150		48-53-3833	48-53-4833	4" Root Cutter
	48-53-2834 / 4513160		48-53-3834	48-53-4834	6" Root Cutter
		48-53-3814			1-1/4" Opening Tool
		48-53-3815			1-1/2" Opening Tool
		48-53-3827 / 4512980			2" Opening Tool
	48-53-2835 / 4513170		48-53-3835	48-53-4835	3" Opening Tool
	48-53-2836 / 4513180		48-53-3836	48-53-4836	4" Opening Tool
	48-53-2837 / 4513190		48-53-3837	48-53-4837	3" Grease Cutter
	48-53-2838 / 4513200		48-53-3838	48-53-4838	4" Grease Cutter
INSPECTION	PART #				DESCRIPTION
	2974-22 / 4520835				M18™ 200' Pipeline Inspection System Kit
	2973-22 / 4520840				M18™ 120' Pipeline Inspection System Kit

PIPELINE INSPECTION SYSTEM

M18

120' PIPELINE INSPECTION SYSTEM

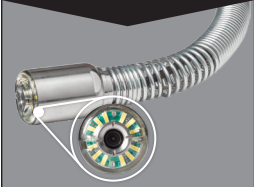
2973-22 / 4520840

IDEAL USE
2" – 6"
DRAIN LINES



SEWER
LATERAL
LINES

25 mm SELF-LEVELING
CAMERA HEAD



BACK

M18

200' PIPELINE INSPECTION SYSTEM

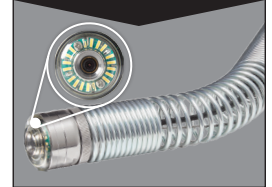
2974-22 / 4520835

IDEAL USE
2" – 6"
DRAIN LINES



SEWER
LATERAL
LINES

34 mm SELF-LEVELING
CAMERA HEAD



BACK

M18

200' MID-STIFF PIPELINE INSPECTION SYSTEM

2975-22 / 4520830

IDEAL USE
2" – 6"
DRAIN LINES



SEWER
LATERAL
LINES



BACK

SPECIAL ORDER

M18

325' STIFF PIPELINE INSPECTION SYSTEM

2976-22

IDEAL USE
3" – 12"
DRAIN LINES



SEWER
LATERAL
LINES



BACK



M18

WIRELESS MONITOR (TOOL ONLY)

2971-20 / 4521090



M12

PIPELINE LOCATOR KIT

2580-21 / 4520845

