



2024 PLUMBING PROMOTIONS



ML24-10634

VALID FEBRUARY 1 TO DECEMBER 31, 2024

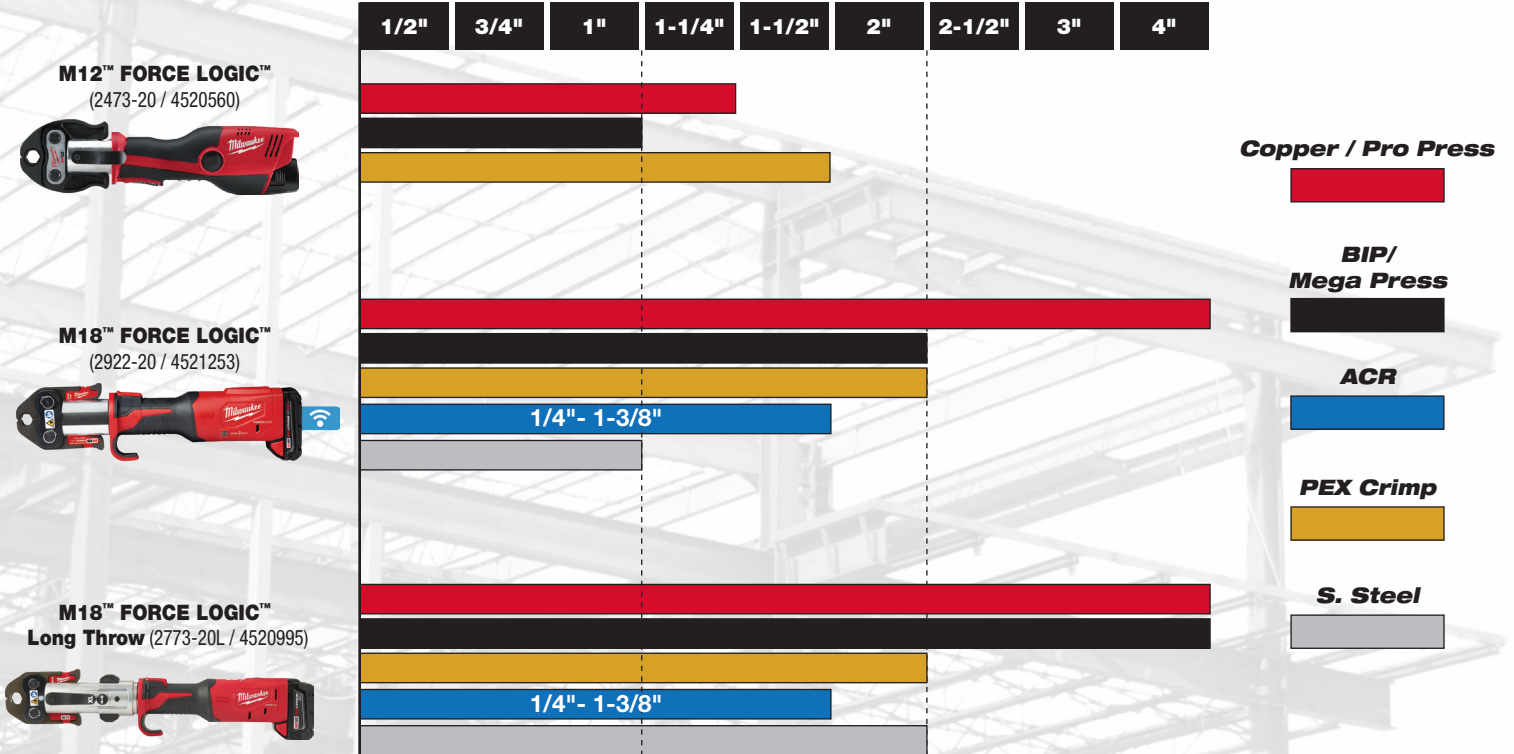
ANDREW SHERET LIMITED



EST 1892



MILWAUKEE® PRESS SOLUTION LANDSCAPE





MILWAUKEE® PRESS SOLUTION LANDSCAPE

NEW PRODUCT HIGHLIGHT

M18 & **M12** FORCELOGIC™ PRESS TOOLS

	BEFORE		TYPE OF CHANGE	NOW		
	PART #	DESCRIPTION		PART #	DESCRIPTION	
CTS		2 1/2"-4" CTS-V Press Ring Kit For M18™ FORCELOGIC™ Press Tools (Discontinuing)	NEW + M12		1/2" - 1-1/4" CTS-V Pivoting Press Ring Kit for M12™ FORCE LOGIC™ Press Tool	
			NEW + M18		1/2" - 2" CTS-V Pivoting Press Ring Kit for M18™ FORCE LOGIC™ Press Tools	
			TRANSITION	M18		2-1/2" - 4" CTS-V Pivoting Press Ring Kit for M18™ FORCE LOGIC™ Press Tools
			NEW + M18		2-1/2" - 4" NIBCO® Press Ring Kit for M18™ FORCE LOGIC™ Long Throw Press Tool	
IPS-P		1/2"-1" IPS-P Press Jaw Kit For M12™ FORCELOGIC™ Press Tool	NO CHANGE		1/2"-1" IPS-P Press Jaw Kit For M12™ FORCELOGIC™ Press Tool	
			NEW + M12		1/2" - 1" IPS-P Pivoting Press Ring Kit for M12™ FORCE LOGIC™ Press Tool	
		1/2"-1" IPS-P Press Jaw Kit For M18™ FORCELOGIC™ Press Tools	NO CHANGE		1/2"-1" IPS-P Press Jaw Kit For M18™ FORCELOGIC™ Press Tools	
			TRANSITION	M18		1/2"-2" IPS-P Pivoting Press Ring Kit
			TRANSITION	M18		2 1/2"-4" IPS-P Pivoting Press Ring Kit



ANDREW SHERET LIMITED



EST 1892

BUY THIS



M12™ FORCE LOGIC™ Press Tool 1/2" - 1" Kit
(2473-22 / 4520565)

GET THIS FREE

M12™ Copper Tubing Cutter
(2471-20 / 4520145)



PLUS ONE OF YOUR CHOICE

- M12™ 1 1/4" Jaw**
(49-16-2453 / 4526769)
- 1/2" IPS Jaw for M12™ FORCE LOGIC™ Press Tool**
(49-16-2450B / 4526776)
- 3/4" IPS Jaw for M12™ FORCE LOGIC™ Press Tool**
(49-16-2451B / 4526778)
- SPECIAL ORDER**
1" IPS Jaw for M12™ FORCE LOGIC™ Press Tool
(49-16-2452B / 4526777)

\$450 VALUE

BUY THIS



M18™ FORCE LOGIC™ Press Tool w/ ONE-KEY™ w/ 1/2" - 2" CTS Jaws
(2922-22 / 4521255)

GET THIS FREE

M18 FUEL™ Compact Band Saw (Tool Only)
(2829-20 / 4520852)



\$400 VALUE

BUY THESE



M18™ FORCE LOGIC™ Long Throw Press Tool Kit (2773-20L / 4520995)

1/2"-2" IPS-P Pivoting Press Ring Kit
(49-16-2697X / 4526816)

GET THESE FREE



M18 FUEL™ Compact Band Saw Kit (2829-22 / 4520905)

1/2" - 2" Copper Jaws w/ Case Included

\$1,600 VALUE

HOW TO REDEEM ELECTRONIC REBATES

- GO TO MILWAUKEETOOL.COM/E-REBATES/IC**
- SELECT A PROMOTION**
- COMPLETE & SUBMIT FORM**



ANDREW SHERET LIMITED



EST 1892

BUY THIS



M12 FUEL™ ProPEX®
Expander Kit w/ 1/2"
- 1" RAPID SEAL™
ProPEX® Expander
Heads (2532-22 / 4520360)

GET THIS FREE



M12™ Cordless PVC
Shear (Bare Tool)
(2470-20 / 4520150)

\$300 VALUE

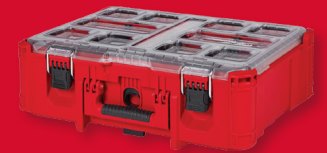
BUY THIS



M18 FUEL™ 2" ProPEX® Expander
Kit w/ ONE-KEY™ with 1 1/4" - 2"
Expander Heads (2932-22XC / 4520784)

GET THIS FREE

PACKOUT™
Deep Organizer
(48-22-8432 / 4526591)



1/2"
ProPEX®
Expander
Head w/
RAPID SEAL™
(49-16-2414 /
4526740)



3/4"
ProPEX®
Expander
Head w/
RAPID SEAL™
(49-16-2416 /
4526744)



1"
ProPEX®
Expander
Head w/
RAPID SEAL™
(49-16-2418 /
4526746)



\$238 VALUE

HOW TO REDEEM ELECTRONIC REBATES



1 GO TO
MILWAUKEETOOL.COM/E-REBATES/IC



2 SELECT A
PROMOTION



3 COMPLETE &
SUBMIT FORM

MILWAUKEE® TOOL CANADA RESERVES THE RIGHT TO CHANGE PRICING, TIMING, ITEM MIX, OR CANCEL THIS PROGRAM/PROMOTION AT ANY TIME BEFORE OR DURING THE STATED TIMEFRAME. LIMITED QUANTITIES AVAILABLE. WHILE SUPPLIES LAST. VALID THROUGH PARTICIPATING DISTRIBUTORS ONLY. OFFER VALID FEBRUARY 1ST 2024 - DECEMBER 31ST 2024.



LIST OF QUALIFYING SKU'S AND CORRESPONDING FREE GOODS



SKU		DESCRIPTION
MKE	AS	QUALIFYING SKUS
2473-22	4520565	M12™ PRESS TOOL KIT
MKE	AS	FREE GOODS
2471-20	4520145	M12™ COPPER TUBING CUTTER
49-16-2453	4526769	M12™ 1-1/4" JAW
49-16-2450B	4526776	M12™ 1/2" BIP JAW
49-16-2451B	4526778	M12™ 3/4" BIP JAW
49-16-2452B	4526777	M12™ 1" BIP JAW

YOUR CHOICE OF 1 JAW



SKU		DESCRIPTION
MKE	AS	QUALIFYING SKUS
2922-22	4521255	M18™ FL PRESS TOOL W/ ONE-KEY™ W/ 1/2"-2" CTS JAWS
MKE	AS	FREE GOODS
2829-20	4520852	M18 FUEL™ COMPACT BANDSAW (TOOL ONLY)



SKU		DESCRIPTION
MKE	AS	QUALIFYING SKUS
2773-20L	4520995	M18™ FL LONG THROW TOOL ONLY
49-16-2697X	4526816	1/2"-2" IPS-P PIVOTING PRESS RING KIT
MKE	AS	FREE GOODS
2829-22	4520905	M18 FUEL™ COMPACT BAND SAW KIT
49-16-2650	4526770	M18™ 1/2" JAW
49-16-2651	4526772	M18™ 3/4" JAW
49-16-2652	4526774	M18™ 1" JAW
49-16-2653	4526761	M18™ 1-1/4" JAW
49-16-2654	4526762	M18™ 1-1/2" JAW
49-16-2655	4526763	M18™ 2" JAW

HOW TO REDEEM ELECTRONIC REBATES

- 1 GO TO MILWAUKEETOOL.COM/E-REBATES/IC
- 2 SELECT A PROMOTION
- 3 COMPLETE & SUBMIT FORM



LIST OF QUALIFYING SKU'S AND CORRESPONDING FREE GOODS



SKU		DESCRIPTION
MKE	AS	QUALIFYING SKUS
2532-22	4520360	M12 FUEL™ ProPEX® EXPANDER KIT
MKE	AS	FREE GOODS
2470-20	4520150	M12™ PLASTIC PIPE SHEAR TOOL

SKU		DESCRIPTION
MKE	AS	QUALIFYING SKUS
2932-22XC	4520784	M18 FUEL™ 2" ProPEX® EXPANDER KIT W/ ONE-KEY™ WITH 1 1/4" - 2" EXPANDER HEADS
MKE	AS	FREE GOODS
48-22-8432	4526591	PACKOUT™ DEEP ORGANIZER
49-16-2414	4526740	1/2" ProPEX® EXPANDER HEAD W/ RAPID SEAL™
49-16-2416	4526744	3/4" ProPEX® EXPANDER HEAD W/ RAPID SEAL™
49-16-2418	4526746	1" ProPEX® EXPANDER HEAD W/ RAPID SEAL™

HOW TO REDEEM ELECTRONIC REBATES

- GO TO MILWAUKEETOOL.COM/E-REBATES/IC
- SELECT A PROMOTION
- COMPLETE & SUBMIT FORM



ANDREW SHERET LIMITED



EST 1892

BUY THIS



**M18 FUEL™
Sectional Machine
with 7/8\"**

GET THIS FREE



**M18™
REDLITHIUM™
HIGH OUTPUT™
HD12.0 Battery**
(48-11-1812 / 4526295)



**M18™
ROVER™ Dual
Power Flood Light**
(2366-20 / 4526402)

\$597 VALUE

BUY ONE OF THESE



**MX FUEL™ Sewer Drum
Machine for 5/8\"**
(MXF500-1CP / 4511300)

**CABLES SOLD
SEPARATELY**



**MX FUEL™ Sewer Drum
Machine w/ POWERTREDZ™
for 5/8\"** (MXF501-1CP / 4511310)

GET THIS FREE



**MX FUEL™
REDLITHIUM™
CP203 Battery**
(MXFCP203 / 4511021)



**Head Attachment
Kit For 5/8\"**
(48-53-2840 / 4513210)

\$1,100 VALUE

HOW TO REDEEM ELECTRONIC REBATES

- GO TO
MILWAUKEETOOL.COM/E-REBATES/IC**
- SELECT A
PROMOTION**
- COMPLETE &
SUBMIT FORM**



ANDREW SHERET LIMITED



EST 1892

BUY THIS



M12™ Drain Snake Kit
(2571-21 / 4520355)

GET THIS FREE



(48-22-8250 / 4526731)



(48-22-7218 / 4526878)



(2108)

\$170 VALUE

BUY THIS



M18 FUEL™ Drain Snake w/ CABLE DRIVE™ Kit
(2772A-21 / 4512210)

GET THIS FREE



(48-22-7218 / 4526878)



(2108)



(48-22-8250 / 4526731)

PLUS ONE OF YOUR CHOICE



\$250+ VALUE

HOW TO REDEEM ELECTRONIC REBATES



1 GO TO
MILWAUKEETOOL.COM/E-REBATES/IC



2 SELECT A PROMOTION



3 COMPLETE & SUBMIT FORM

MILWAUKEE® TOOL CANADA RESERVES THE RIGHT TO CHANGE PRICING, TIMING, ITEM MIX, OR CANCEL THIS PROGRAM/PROMOTION AT ANY TIME BEFORE OR DURING THE STATED TIMEFRAME. LIMITED QUANTITIES AVAILABLE. WHILE SUPPLIES LAST. VALID THROUGH PARTICIPATING DISTRIBUTORS ONLY. OFFER VALID FEBRUARY 1ST 2024 - DECEMBER 31ST 2024.



LIST OF QUALIFYING SKU'S AND CORRESPONDING FREE GOODS



SKU		DESCRIPTION
MKE	AS	QUALIFYING SKUS
2818A-21	4512340	M18 FUEL™ SECTIONAL MACHINE 7/8" KIT
MKE	AS	FREE GOODS
48-11-1812	4526295	M18™ HIGH OUTPUT™ HD12.0 BATTERY
2366-20	4526402	M18™ DUAL POWER FLOOD LIGHT

SKU		DESCRIPTION
MKE	AS	QUALIFYING SKUS
MXF500-1CP	4511300	MX FUEL™ SEWER DRUM MACHINE FOR 5/8" - 3/4"
MXF501-1CP	4511310	MX FUEL™ SEWER DRUM MACHINE W/ POWERREDZ™ FOR 5/8" - 3/4"
MKE	AS	FREE GOODS
MXFCP203	4511010	MX FUEL™ REDLITHIUM™ CP203 BATTERY
48-53-2840	4513210	HEAD ATTACHMENT KIT FOR 5/8" & 3/4" DRUM CABLE

HOW TO REDEEM ELECTRONIC REBATES

- GO TO MILWAUKEETOOL.COM/E-REBATES/IC
- SELECT A PROMOTION
- COMPLETE & SUBMIT FORM



LIST OF QUALIFYING SKU'S AND CORRESPONDING FREE GOODS



SKU		DESCRIPTION
MKE	AS	QUALIFYING SKUS
2571-21	4520355	M12™ DRAIN SNAKE KIT
		FREE GOODS
48-22-7218	4526878	18" AL PIPE WRENCH
48-22-8250	4526731	JOBSITE COOLER
2108	SPECIAL ORDER	ROVER™ MAGNETIC FLOOD LIGHT



SKU		DESCRIPTION
MKE	AS	QUALIFYING SKUS
2772A-21	4512210	M18™ DRAIN SNAKE KIT
		FREE GOODS
48-22-7218	4526878	18" AL PIPE WRENCH
48-22-8250	4526731	JOBSITE COOLER
2108	SPECIAL ORDER	ROVER™ MAGNETIC FLOOD LIGHT
48-53-2671	SPECIAL ORDER	1/4" x 35' DRAIN CABLE
48-53-2672	4512630	1/4" x 50' DRAIN CABLE
48-53-2673	4512640	5/16" x 35' DRAIN CABLE
48-53-2675	4512660	3/8" x 35' DRAIN CABLE
48-53-2561	4512725	5/16" X 25' BULB CABLE PREM
48-53-2562	SPECIAL ORDER	5/16" X 25' DH CABLE PREM

YOUR CHOICE OF 1 CABLE

HOW TO REDEEM ELECTRONIC REBATES

- GO TO MILWAUKEETOOL.COM/E-REBATES/IC**
- SELECT A PROMOTION**
- COMPLETE & SUBMIT FORM**

MILWAUKEE® ProPEX® EXPANDERS

STANDARD ProPEX® HEADS

RAPIDSEAL™ ProPEX® HEADS

M12 FUEL™ ProPEX® Expander Kit w/ 1/2"-1" RAPID SEAL™ ProPEX® Expander Heads
(2532-22 / 4520360)



M12™ PEX Expander
(2532-22)



M18™ ProPEX® Expansion Tool Kit
(2632-22XC / 4520780)



M18™ PEX Expansion
(2632-22XC)



M18 FUEL™ 2" ProPEX® Expander Kit w/ ONE-KEY™ w/ 1-1/4"- 2" Expander Heads
(2932-22XC / 4520784)



M18 FUEL™ 2" ProPEX® Expander Kit w/ ONE-KEY™
(2932-22XC)



M18™ FORCE LOGIC™ 2"-3" ProPEX®
(2633-22)



	3/8"	1/2"	5/8"	3/4"	1"	1-1/4"	1-1/2"	2"	2-1/2"	3"
M12™ PEX Expander (2532-22)										
M18™ PEX Expansion (2632-22XC)										
M18 FUEL™ 2" ProPEX® Expander Kit w/ ONE-KEY™ (2932-22XC)										
M18™ FORCE LOGIC™ 2"-3" ProPEX® (2633-22)										

CABLE & ACCESSORY MATRIX

	LINE SIZE	CABLE DIAMETER	MODEL #	DESCRIPTION	COMPATIBLE WITH	HEAD ATTACHMENTS w/ RUST GUARD™ PLATING		
AUGER CABLES	1-1/4" – 2"	3/8"	48-53-2577	3/8" x 6' Bulb Head TRAPSSNAKE™ Urinal	TRAPSSNAKE™ 4' Urinal Auger 3574, 49-16-3574	N/A		
	2" – 4"	1/2"	48-53-2576	1/2" x 4' Bulb Head TRAPSSNAKE™ Toilet	TRAPSSNAKE™ 6' Toilet Auger 3576, 49-16-3576	N/A		
	1/2" – 2"	1/4"	48-53-2578	1/4" x 25' Drop Head Cable	TRAPSSNAKE™ 25' Auger w/ CABLE DRIVE™, 49-16-2573	N/A		
	1/2" – 2"	1/4"	48-53-2579	1/4" x 25' Bulb Head Cable	TRAPSSNAKE™ 25' Auger w/ CABLE DRIVE™, 49-16-2573	N/A		
HANDHELD MACHINE CABLES	1-1/4" – 2"	1/4"	48-53-2563	1/4" x 25' Inner Core Bulb Head w/ RUST GUARD™	M12™ Drain Snake – 2571 M18 FUEL™ Drain Snake w/ CABLE DRIVE™ – 2772	N/A		
			48-53-2564	1/4" x 25' Inner Core Drop Head w/ RUST GUARD™				
			48-53-2671	1/4" x 35' Inner Core Bulb Head w/ RUST GUARD™	M18 FUEL™ Drain Snake w/ CABLE DRIVE™ 2772			
			48-53-2672	1/4" x 50' Inner Core Bulb Head w/ RUST GUARD™				
	1-1/4" – 2-1/2"	5/16"	48-53-2561	5/16" x 25' Inner Core Bulb Head w/ RUST GUARD™	M12™ Drain Snake – 2571 M18 FUEL™ Drain Snake w/ CABLE DRIVE™ – 2772	N/A		
			48-53-2562	5/16" x 25' Inner Core Drop Head w/ RUST GUARD™				
			48-53-2673	5/16" x 35' Inner Core Bulb Head w/ RUST GUARD™	M18 FUEL™ Drain Snake w/ CABLE DRIVE™ – 2772			
			48-53-2674	5/16" x 50' Inner Core Bulb Head w/ RUST GUARD™				
	2" – 3"	3/8"	48-53-2676	3/8" x 25' Inner Core w/ RUST GUARD™	M18 FUEL™ Drain Snake w/ CABLE DRIVE™ 2772	48-53-2685	2" – 3" Head Attachment Kit	48-53-2681 Small Bulb Head
			48-53-2675	3/8" x 35' Inner Core w/ RUST GUARD™			48-53-2682 Small Drop Head	48-53-2683 1" Spade Bit



CABLE & ACCESSORY MATRIX CONT.

	LINE SIZE	CABLE DIAMETER	MODEL #	DESCRIPTION	COMPATIBLE WITH	HEAD ATTACHMENTS w/ RUST GUARD™ PLATING			
DRUM MACHINE CABLES	1-1/4" – 2"	5/16"	48-53-2772	5/16" x 75' Inner Core Drop Head w/ RUST GUARD™	M18 FUEL™ SWITCH PACK™ Sectional Drum Machine 2775	N/A			
	1-1/4" – 3"	5/8"	48-53-2775	5/8" x 50' Flexible Open Wind w/ RUST GUARD™	M18 FUEL™ SWITCH PACK™ Sectional Drum Machine 2775	48-53-2685	2" – 3" Head Attachment Kit	48-53-2681	Small Bulb Head
	1-1/2" – 3"	3/8"	48-53-2776	3/8" x 75' Inner Core Cable	M18™ Drum Machine 2817	48-53-2790	3" – 4" Head Attachment Kit	48-53-2683	1" Spade Bit
	1-1/2" – 3"	3/8"	48-53-2777	3/8" x 100' Inner Core Cable					
	2" – 3"	3/8"	48-53-2773	3/8" x 50' Inner Core w/ RUST GUARD™	M18 FUEL™ SWITCH PACK™ Sectional Drum Machine 2775	48-53-2790	3" – 4" Head Attachment Kit	48-53-2786	Medium Funnel Head
	3" – 4"	1/2"	48-53-2774	1/2" x 25' Inner Core w/ RUST GUARD™	M18 FUEL™ SWITCH PACK™ Sectional Drum Machine 2775	48-53-2790	3" – 4" Head Attachment Kit	48-53-2787	Medium Drop Head
48-53-2788								1-1/2" Spade Bit	
3" – 4"	1/2"	48-53-2778	1/2" x 75' Inner Core Cable	M18™ Drum Machine 2817	48-53-2790	3" – 4" Head Attachment Kit	48-53-2789	1-1/2" C-Cutter	
DRUM MACHINE CABLES CONT.	3" – 6"	5/8"	48-53-2325	5/8" x 25' Inner Core	MX FUEL™ Sewer Drum Machine MXF500	48-53-2840	3" – 8" Head Attachment Kit	48-53-2830	Straight Auger
			48-53-2350	5/8" x 50' Inner Core				48-53-2831	Funnel Auger
			48-53-2310	5/8" x 100' Inner Core				48-53-2832	3" Root Cutter
	4" – 8"	3/4"	48-53-2425	3/4" x 25' Inner Core	MX FUEL™ Sewer Drum Machine MXF500	48-53-2840	3" – 8" Head Attachment Kit	48-53-2833	4" Root Cutter
			48-53-2450	3/4" x 50' Inner Core				48-53-2834	6" Root Cutter
			48-53-2410	3/4" x 100' Inner Core				48-53-2835	3" Opening Tool
					MX FUEL™ Sewer Drum Machine w/ POWERREDZ™ MXF501			48-53-2836	4" Opening Tool
								48-53-2837	3" Grease Cutter
								48-53-2838	4" Grease Cutter
SECTIONAL MACHINE CABLES	1-1/4" – 2"	5/8"	48-53-2680	5/8" x 7-1/2' All-Purpose	M18 FUEL™ Sectional Machine 2818	48-53-3820	1-1/4" – 2" Head Attachment Kit	48-53-3811	Drop Head Bulb Auger
	2" – 6"	7/8"	48-53-2852	7/8" x 15' All-Purpose	M18 FUEL™ Sectional Machine 2818	48-53-3839	2" – 4" Head Attachment Kit	48-53-3812	Drop Head
								48-53-3813	Straight Auger
								48-53-3814	Funnel Auger
								48-53-3815	Opening Tool
								48-53-3816	1-1/2" Opening Tool
								48-53-3817	Flexible Straight Auger
	3" – 8"	1-1/4"	48-53-2851	1-1/4" x 15' All-Purpose	M18 FUEL™ Sewer Sectional Machine w/ CABLE DRIVE™ 2871	48-53-3840	3" – 6" Head Attachment Kit	48-53-3818	Opening Tool
								48-53-3819	2" Opening Tool
								48-53-3820	3" Opening Tool
								48-53-3821	2" Root Cutter
								48-53-3822	3" Root Cutter
48-53-3823								3" Grease Cutter	
48-53-2854	1-1/4" x 15' Heavy Duty	48-53-2854	1-1/4" x 15' Heavy Duty	M18 FUEL™ Sewer Sectional Machine w/ CABLE DRIVE™ 2871	48-53-4840	3" – 8" Head Attachment Kit	48-53-3824	Straight Auger	
							48-53-3825	Funnel Auger	
							48-53-3826	3" Root Cutter	
							48-53-3827	4" Root Cutter	
							48-53-3828	6" Root Cutter	
							48-53-3829	3" Opening Tool	
48-53-3830	4" Opening Tool								
48-53-3831	3" Grease Cutter								
48-53-3832	4" Grease Cutter								
48-53-3833	Straight Auger								
48-53-3834	Funnel Auger								
48-53-3835	3" Root Cutter								
48-53-3836	4" Root Cutter								
48-53-3837	6" Root Cutter								
48-53-3838	3" Opening Tool								
48-53-3839	4" Opening Tool								
48-53-3840	3" Grease Cutter								
48-53-3841	4" Grease Cutter								



SEWER & DRAIN MAINTENANCE

MACHINES	RECOMMENDED APPLICATION SELECTION			CABLE CAPACITY	
	APPLICATIONS	PIPE SIZES	MAX DISTANCE	CABLE SIZES	PIPE SIZES
<p>MX FUEL™ Sewer Drum Machine w/ POWERTREDZ™ (MXF501-1CP)</p>	<p>Sewer Lateral Lines</p>	3" – 8"	200'	5/8" 3/4"	3" – 6" 4" – 8"
<p>MX FUEL™ Sewer Drum Machine (MXF500-1CP)</p>	<p>Sinks Kitchen Sinks Bathtubs Showers Roofstacks Sewer Lateral Lines</p>	3" – 8"	200'	5/8" 3/4"	3" – 6" 4" – 8"
<p>M18 FUEL™ High Speed Chain Snake (2819-22)</p>	<p>Bathtubs Showers Bathroom Kitchen Sinks Floor Drains Main Line</p>	1-1/2" – 4"	75'	5/16"	1-1/2" – 4"
<p>M18™ Drum Machine (2572)</p>	<p>Bathtubs Showers Bathroom Kitchen Sinks Floor Drains</p>	1-1/4" – 4"	100'	Inner Core 5/16" x 75' 3/8" x 50' 1/2" x 50' Open Wind 5/8" x 50'	1-1/4" – 2-1/2" 2" – 3" 3" – 4" 1-1/4" – 3"
<p>M18 FUEL™ SWITCH PACK Sectional Drum System (2572)</p>	<p>Floor Drains Main Line Sewer Lateral Lines</p>	3" – 8"	200'	5/8" 3/4"	3" – 6" 4" – 8"
<p>M18 FUEL™ Sectional Machine (2818-21)</p>	<p>Sewer Lateral Lines</p>	1-1/4" – 6"	150'	5/8" 7/8"	1-1/4" – 2" 2" – 6"
<p>M18 FUEL™ Sewer Sectional Machine w/ CABLE DRIVE™ (2871-22)</p>	<p>Sewer Lateral Lines</p>	2" – 8"	200'	7/8" 1-1/4"	2" – 6" 3" – 8"

DRUM MACHINE & DRUM CABLES	PART #	DESCRIPTION			
	MXF500-1CP	MX FUEL™ Sewer Drum Machine Kit			
	MXF501-1CP	MX FUEL™ Sewer Drum Machine w/ POWERTREDZ™ Kit			
	48-53-2325	5/8" x 25' Inner Core Drum Cable			
	48-53-2350	5/8" x 50' Inner Core Drum Cable			
	48-53-2310	5/8" x 100' Inner Core Drum Cable			
	48-53-2425	3/4" x 25' Inner Core Drum Cable			
	48-53-2450	3/4" x 50' Inner Core Drum Cable			
	48-53-2410	3/4" x 100' Inner Core Drum Cable			
	48-53-2802	5/8" x 2' Leader Cable			
48-53-2902	3/4" x 2' Leader Cable				
SECTIONAL MACHINE & SECTIONAL CABLES	PART #	DESCRIPTION			
	2818-21	M18 FUEL™ Sectional Machine for 5/8" & 7/8" Cables			
	2818B-21	M18 FUEL™ Sectional Machine with 5/8" Cable			
	2818A-21	M18 FUEL™ Sectional Machine with 7/8" Cable			
	2871-22	M18 FUEL™ Sewer Sectional Machine Kit w/ CABLE DRIVE™ (Accessories & Cables Sold Separately)			
	2871A-21	M18 FUEL™ Sewer Sectional Machine Kit w/ CABLE DRIVE™ (1-1/4" Accessory Set)			
	48-53-2680	5/8" x 7-1/2' All-Purpose Open Wind Sectional Cable			
	48-53-2852	7/8" x 15' All-Purpose Open Wind Sectional Cable			
	48-53-2851	1-1/4" x 15' All-Purpose Open Wind Sectional Cable			
	48-53-2854	1-1/4" x 15' Heavy Duty Open Wind Sectional Cable			
ACCESSORIES	PART #				DESCRIPTION
	DRUM	SECTIONAL			
	ALL	5/8"	7/8"	1-1/4"	
		48-53-3812			Drop Head Straight Auger
		48-53-3811			Drop Head Bulb Auger
			48-53-3829		Flexible Straight Auger
	48-53-2830	48-53-3830	48-53-4830		Straight Auger
			48-53-3828		Flexible Funnel Auger
		48-53-3813			Funnel Auger
	48-53-2831	48-53-3831	48-53-4831		Funnel Auger
			48-53-3825		2" Root Cutter
	48-53-2832	48-53-3832	48-53-4832		3" Root Cutter
	48-53-2833	48-53-3833	48-53-4833		4" Root Cutter
	48-53-2834	48-53-3834	48-53-4834		6" Root Cutter
		48-53-3814			1-1/4" Opening Tool
		48-53-3815			1-1/2" Opening Tool
		48-53-3827			2" Opening Tool
	48-53-2835	48-53-3835	48-53-4835		3" Opening Tool
	48-53-2836	48-53-3836	48-53-4836		4" Opening Tool
	48-53-2837	48-53-3837	48-53-4837		3" Grease Cutter
48-53-2838	48-53-3838	48-53-4838		4" Grease Cutter	

SEWER & DRAIN MAINTENANCE - INSPECTION

MACHINES	RECOMMENDED APPLICATION SELECTION				
	APPLICATIONS	PIPE SIZES	MAX DISTANCE	CAMERA HEAD DIAMETER	PUSH CABLE DIAMETER
<p>M18™ 100' Flexible Pipeline Inspection System (3972-22)</p>	1 1/2" – 3" P-Traps Bathroom & Kitchen Sinks Floor Drains Main Line	1-1/2" – 4"	100'		9.5mm
<p>M18™ 120' Mid-Stiff Pipeline Inspection System (3973-22)</p>	3" – 4" P-Traps Roofstacks Floor Drains Sewer Lateral Lines		120'	25mm Self Leveling	10mm
<p>M18™ 200' Mid-Stiff Pipeline Inspection System (3975-22)</p>	3" – 4" P-Traps Floor Drains Sewer Lateral Lines	2" – 6"	200'		
<p>M18™ 200' Stiff Pipeline Inspection System (3974-22)</p>	Sewer Lateral Lines	3" – 10"	200'		12mm
<p>M18™ 325' Stiff Pipeline Inspection System (3976-22)</p>	Sewer Lateral Lines Manholes	3" – 12"+	325'	34mm Self Leveling	

INSPECTION	PART #	DESCRIPTION
	3972-22	M18™ 100' Flexible Pipeline Inspection System
	3973-22	M18™ 120' Mid-Stiff Pipeline Inspection System
	3975-22	M18™ 200' Mid-Stiff Pipeline Inspection System
	3974-22	M18™ 200' Stiff Pipeline Inspection System
	3976-22	M18™ 325' Stiff Pipeline Inspection System





PIPELINE INSPECTION SYSTEM

M18

100' FLEXIBLE PIPELINE INSPECTION SYSTEM

3972-22 / 4520840

IDEAL USE
2" - 6"
DRAIN LINES



SEWER
LATERAL
LINES



BACK

M18

120' PIPELINE INSPECTION SYSTEM

3973-22 / 4520840

IDEAL USE
2" - 6"
DRAIN LINES



SEWER
LATERAL
LINES



BACK

M18

200' PIPELINE INSPECTION SYSTEM

3974-22 / 4520835

IDEAL USE
2" - 6"
DRAIN LINES



SEWER
LATERAL
LINES



BACK

M18

200' MID-STIFF PIPELINE INSPECTION SYSTEM

3975-22 / 4520830

IDEAL USE
2" - 6"
DRAIN LINES



SEWER
LATERAL
LINES



BACK

SPECIAL ORDER

M18

325' STIFF PIPELINE INSPECTION SYSTEM

3976-22

IDEAL USE
3" - 12"
DRAIN LINES



SEWER
LATERAL
LINES



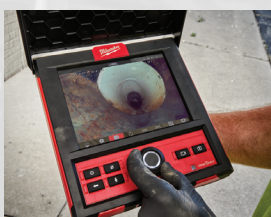
BACK

M18

WIRELESS MONITOR

(TOOL ONLY)

2971-20 / 4521090



M12

PIPELINE LOCATOR KIT

2580-21 / 4520845



SHERET.COM/LOCATIONS



ANDREW SHERET LIMITED



EST 1892

NEW!



MX FUEL™ Pipe Threading Machine Kit (MXF512-2XC / 4511335)



UP TO 140 3/4" THREADS PER CHARGE



FASTEST, SET UP TO CLEAN UP



EASIEST TRANSPORT, WORK ANYWHERE



Milwaukee® Dark Thread Cutting Oil (49-08-5100 / 4513320)



NPT Pipe Threading Die Head w/ Micro-Adjust (49-16-5100 / 4513325)



1/2" - 3/4" High Speed NPT Universal Pipe Threading Dies (48-36-1203 / 4513350)



1" - 2" High Speed NPT Universal Pipe Threading Dies (48-36-1204 / 4513355)



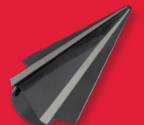
Milwaukee® Cutting Wheels (48-36-1401 / 4513360)



Milwaukee® Threading Jaw Inserts for Coated Pipe (49-16-5102 / 4513330)



Milwaukee® Threading Jaw Inserts (49-16-5104 / 4513340)



Milwaukee® Reamer Cone for MX FUEL™ Pipe Threading Machine (49-16-5105 / 4513345)

MILWAUKEE® TOOL CANADA RESERVES THE RIGHT TO CHANGE PRICING, TIMING, ITEM MIX, OR CANCEL THIS PROGRAM/PROMOTION AT ANY TIME BEFORE OR DURING THE STATED TIMEFRAME. LIMITED QUANTITIES AVAILABLE. WHILE SUPPLIES LAST. VALID THROUGH PARTICIPATING DISTRIBUTORS ONLY. OFFER VALID FEBRUARY 1ST 2024 - DECEMBER 31ST 2024.



ANDREW SHERET LIMITED



EST 1892



NEW!



M18 FUEL
Pipe Threader
w/ ONE-KEY™ Kit
(2874-22HD / 4521320)

M18 FUEL
Compact Pipe Threader w/ ONE-KEY™
w/ 1/2" - 1-1/4" Compact NPT Forged
Aluminum Die Heads
(2870-22 / 4521323)

**6" Leveling Tripod
Chain Vise**
(48-22-8690 / 4526738)

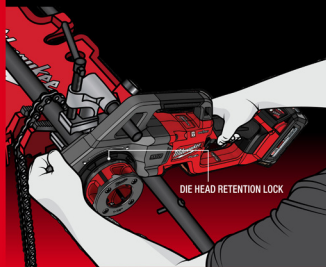
**ENHANCED SAFETY,
KICKBACK
CONTROL**

AUTOSTOP™: SENSES KICKBACK & AUTOMATICALLY SHUTS TOOL OFF



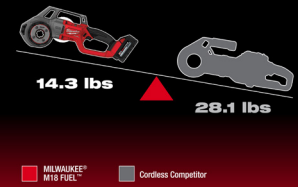
**SIDE-GRIP
THREAD STARTS**

NO ENGAGEMENT WITH SPINNING DIE HEAD



**LIGHTEST
CORDLESS
THREADER**

UP TO 40% LIGHTER SOLUTION



FORGED ALUMINUM DIE HEADS

**INDUSTRY'S
LIGHTEST
DIE HEADS**



**50%
LIGHTER
WEIGHT***

**MILITARY GRADE
FORGED ALUMINUM**
Lightweight and
maximum durability



**UP TO 25%
LARGER
SLOTS**
For easy use



■ Less nesting
■ Easy oil application

DIE HEADS



2874-22HD

Part No.	Size	Description
48-36-1001	1/2"	Alloy NPT Die Head
48-36-1002	3/4"	
48-36-1003	1"	
48-36-1004	1-1/4"	
48-36-1005	1-1/2"	
48-36-1006	2"	

Replacement dies sold separately.
*When compared to 1/2" - 2" competitive die heads.

**COMPACT
DIE HEADS**



2870-22

Part No.	Size	Description
48-36-1007	1/2"	HIGH SPEED NPT Die Head
48-36-1008	3/4"	
48-36-1009	1"	
48-36-1010	1-1/4"	
48-36-1011	1-1/2"	
48-36-1012	2"	
48-36-1060	1/2" - 2"	

Part No.	Size	Description
48-36-1307	1/2"	Compact Alloy NPT Die Head
48-36-1308	3/4"	
48-36-1309	1"	
48-36-1310	1-1/4"	
48-36-1063	1/2" - 1-1/4"	Compact Alloy NPT Die Heads Kit